

## Facts and Figures

[Gold and silver](#)

[Ironsand](#)

[Industrial Minerals](#)

[Production data](#)

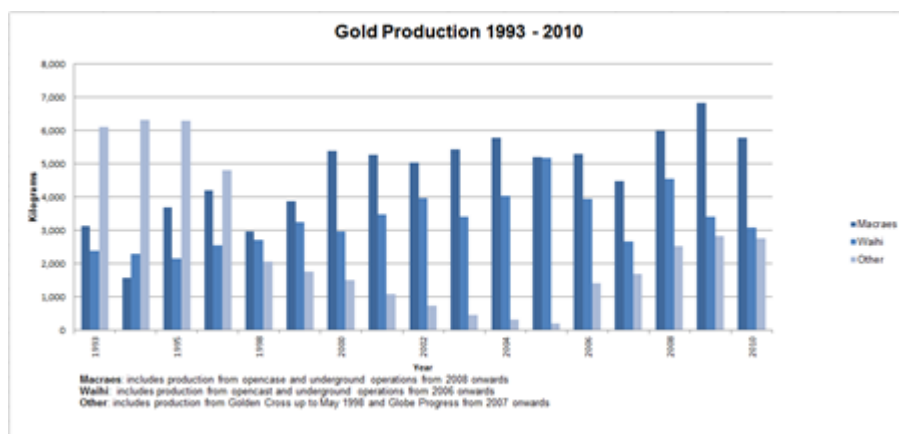
[Expenditure Statistics](#)

### Gold and silver

Based on average of sale values reported in Royalty Returns:

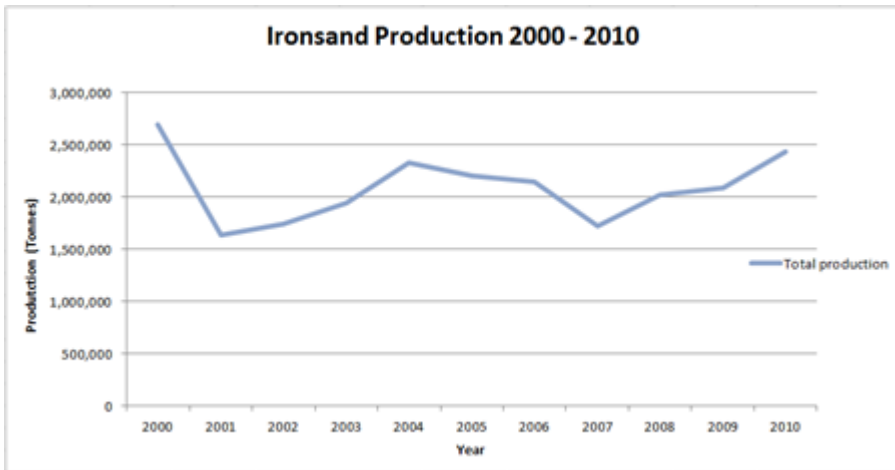
- Gold - \$54,679.51 NZD per kg (\$1,700.74 NZD per troy ounce or \$1224.53 USD per troy ounce) at the Trade Weighted Index of \$1NZD = \$0.72 (2010 monthly average taken from the Reserve Bank of New Zealand)
- Silver - \$901.55 NZD per kg (\$649.12 USD per kg) at the Trade Weighted Index of \$1NZD = \$0.72 (2010 monthly average taken from the Reserve Bank of New Zealand)

[Gold Production \(kg\) 1993-2010 \[49 kB XLS\]](#)



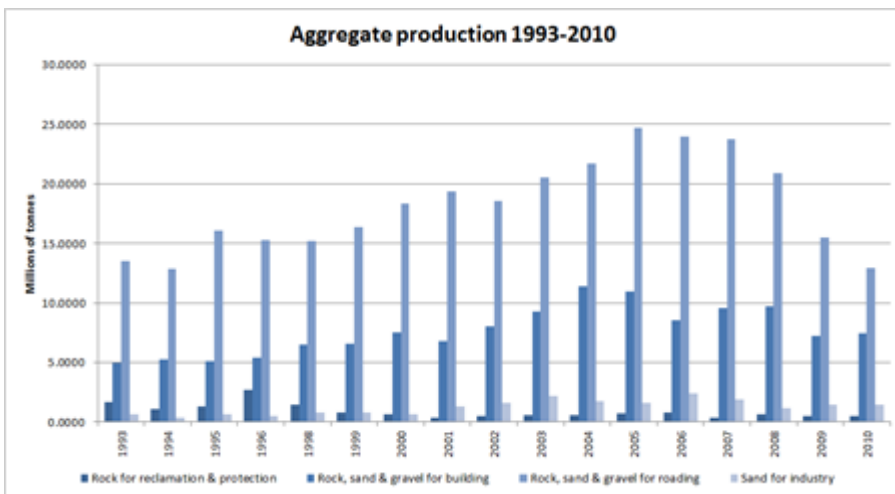
### Ironsand

2,438,641 tonnes of sand was reported to have been mined in the 2010 year at the Waikato North Head and Taharoa mines.



## Industrial Minerals

Reported industrial mineral production decreased by 8 percent for the 2010 year. The total value of all industrial minerals produced in 2010 was just over \$361 million.



## Production data\*

- [2010 Mining Production Statistics \[132 kB XLS\]](#)
- [2009 Mining Production Statistics \[129 kB XLS\]](#)
- [2008 Mining Production Statistics \[91 kB XLS\]](#)
- [2007 Mining Production Statistics \[144 kB XLS\]](#)
- [2006 Mining Production Statistics \[107 kB XLS\]](#)
- [2005 Mining Production Statistics \[67 kB XLS\]](#)
- [2004 Mining Production Statistics \[71 kB XLS\]](#)
- [2003 Mining Production Statistics \[63 kB XLS\]](#)
- [2002 Mining Production Statistics \[54 kB XLS\]](#)
- [2001 Mining Production Statistics \[52 kB XLS\]](#)

- [2000 Mining Production Statistics \[50 kB XLS\]](#)
  - [1970-1999 Mining Production Statistics \[263 kB XLS\]](#)
- 

## Expenditure Statistics

Expenditure is reported for a 12 month period from the permit anniversary date, as opposed to being for a period from the 1 April YYYY to 31 March YYYY in previous years for all permits.

[1999-2010 Expenditure Statistics \[124 kB XLS\]](#)

During the 2008 year, a change in expenditure reporting requirements for prospecting and exploration permits came into effect under regulation 37 of the Crown Minerals (Minerals and Coal) Regulations 2007. Please note this change if comparing the aggregated data prior to 1 April 2008

### **Prospecting and exploration expenditure**

Includes all expenditure on prospecting and exploration activities within permits, other than expenditure on consents and agreements, legal fees, the purchase of plant and equipment, office and administrative expenses, or the amount of any fees related to the permit.

### **Consents and agreements expenditure**

Includes expenditure on legal fees in obtaining and maintaining access arrangements and resource consents relating to prospecting and exploration.

### **Other expenditure**

Includes expenditure on plant and equipment, office and administrative expenses, fees, restoration costs and other expenditure related to permits.

---

**Please note:** The information provided on the Mining Production and Exploration/Prospecting Expenditure statistics is intended to provide general information to the public and although every effort has been taken to ensure that the information set out is accurate, visitors to this website are advised that the information provided for industrial mineral commodities is based on an industry-wide survey, and variations in yearly production may be due to information not being supplied during the survey period.

\* New Zealand Petroleum & Minerals was notified in 2010 of a discrepancy in the figures reported for gold production dating back to the 2006 year. As such, the spreadsheets from 2006, 2007 and 2008 have been amended and replaced.