



NEW ZEALAND
PETROLEUM & MINERALS

Using Permit Webmaps

PERMIT WEBMAPS OVERVIEW

New Zealand Petroleum & Minerals produces two web map applications, that the public can view permit information through;

Petroleum - <http://data.nzpam.govt.nz/permitwebmaps?commodity=petroleum>

Minerals - <http://data.nzpam.govt.nz/permitwebmaps?commodity=minerals>

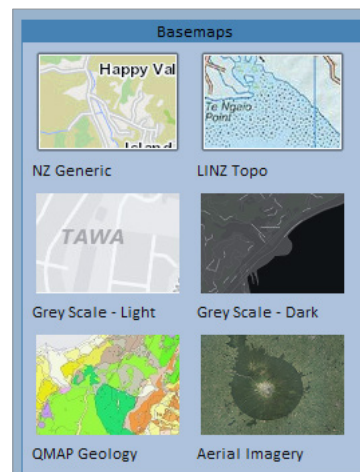
The Permit Webmap applications show all current permit and tender data, the Petroleum Permit Webmap also shows petroleum well locations. These web map applications are kept up to date by our permit registry system and GIS database.

COMPATIBILITY

Permit Webmaps are Java based applications and work best on Google Chrome, Firefox and the latest version of Internet Explorer. Permit Webmaps also work on Apple devices, Iphone and Ipad. The shapefile download and map printing functionality will not work if your browser settings have pop-ups blocked.

BASEMAPS

You can change the underlying map of Permit Webmaps through the 'Basemaps' menu



www.nzpam.govt.nz nzpam@mbie.govt.nz
FREEPHONE (WITHIN NEW ZEALAND): 0508 263 782

PO Box 1473, Wellington 6140, New Zealand
INTERNATIONAL CALLS: +64 3 962 6179 FAX: +64 4 471 0187

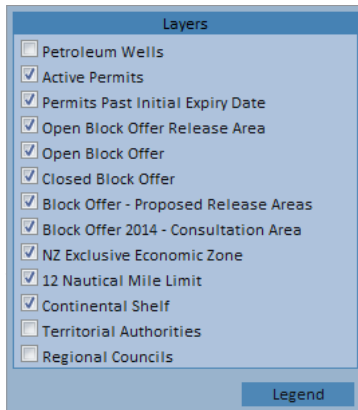


**MINISTRY OF BUSINESS,
INNOVATION & EMPLOYMENT**
HĪKINA WHAKATUTUKI

New Zealand Government

LAYERS AND LEGEND

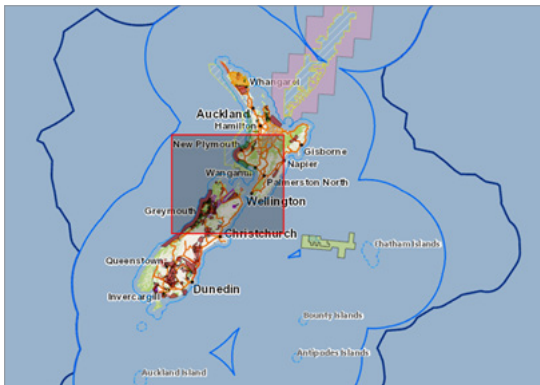
If you click the 'Legend' menu, the legend showing all the data that is currently on the map will appear. If there are layers that you do not want showing on the map or in the legend, they can be turned off or on through the 'Layers' menu. Some layers are off default, like the local authorities, others, like the petroleum wells, are scale dependent and will only appear when you zoom in far enough.



NAVIGATION

Use the mouse wheel to zoom the map in or out, or double click on an area of interest. Click, hold and drag the mouse to pan the map.

To zoom to a particular area hold down the 'Shift' button and click, hold and drag a rectangle with your mouse to select the area you want to zoom to.



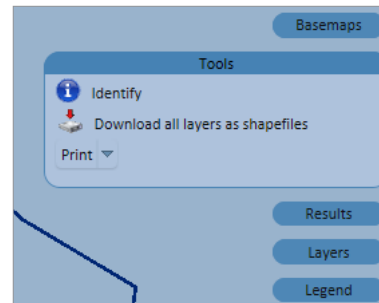
The forward and back arrows on the left hand side allow you to navigate through the views you have zoomed or panned the map to. The plus and minus symbols will zoom the map in and out. To return to the full extent of the map click on the New Zealand icon, shown below;



QUERYING THE MAP

IDENTIFY TOOL

Click 'Tools' on the right hand side of the map and click the 'Identify' tool. With this tool selected you can click permits and other features of interest to view the basic details.



SEARCH BAR

The Search Bar at the top of the map lets you do a Google style search for any map content; including permit numbers, company or operation name, minerals, well names, local authorities and place names.

You can filter out layers you don't want search results for using the 'Filter By' menu.

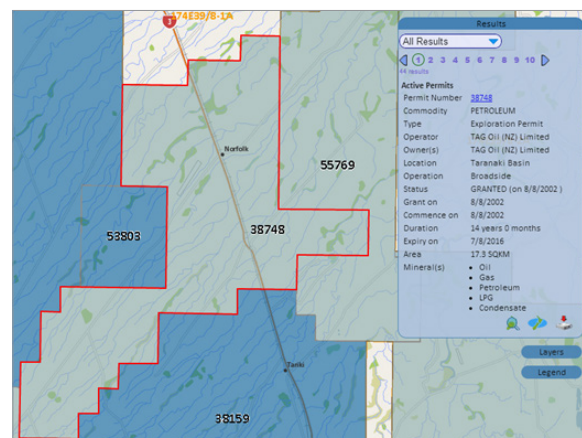


RESULTS

Search results from either the Search Bar or the 'Identify' tool appear in the 'Results' window on the right of the map.

If you have multiple results from your query, the arrows near the top of the results window let you scroll through them. When you have scrolled to the feature you are interested in the magnifying glass icon at the bottom of the results window will zoom you to the selected feature.

The 'All Results' drop down menu lets you filter what results you want shown in the results window



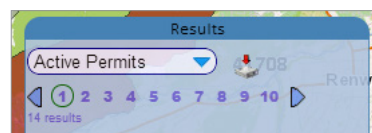
Clicking on the blue permit number will launch a new browser tab containing more detailed information about the permit

PERMIT SUMMARY							
15084 15084							
To view the permit summary, click on the document icon. To view information about the permit map, click on the map icon.							
Permit Details							
Number	Client Name	Community	Permit Type	RP Year	Document	Location	Offshore
15084	Trans-Tasman Resources Limited	Horowhenua	Exploration Permit	15084	15084	Tasman	Yes
Summary of Changes							
Number	Description	Received Date	Status	Granted Date			
15084	Permit Application	18-Nov-2013 07:30:00	Granted	18-Dec-2013			
Work Progression							
24 Months	Other Activity	[Detailed description of work progression]					

At the bottom of the 'Results' window if you click the Download icon this will download just the feature that you have selected.



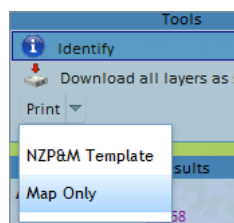
If your search returns you multiple results you can filter the results with the 'All Results' drop down menu. If you choose a layer, the Download icon appears, clicking this will download the search results for just that layer.



CONSUMING DATA

PRODUCE PRINTABLE MAPS

Click the 'Print' button under 'Tools' and choose either a plain map, or the NZP&M template to save or print a PDF of the current map view.

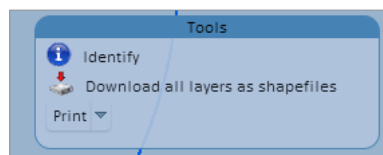


At the bottom of the 'Results' window if you click the New Zealand icon a new browser tab will launch showing a static map of the selected permit.



DOWNLOAD SHAPEFILES

In the 'Tools' menu there is the option to 'Download all layers as shapefiles'. Clicking this will generate and begin to download a .zip file of layers in the map.



VIEWING DATA IN EXCEL

If you want to use data from Permit Webmaps in Excel, download the data shapefiles you want using one of the above methods. Open the downloaded content in Windows Explorer, a shapefile is made up from a number of files, one of which is the .dbf with an Excel icon, this single file can be opened in Excel.

Name	Size	Packed Size
Mineral_and_Coal_Permits_NZTM.shx	4 996	4 996
Mineral_and_Coal_Permits_NZTM.shp.xml	12 387	12 387
Mineral_and_Coal_Permits_NZTM.shp	3 138 084	3 138 084
Mineral_and_Coal_Permits_NZTM.sbx	332	332
Mineral_and_Coal_Permits_NZTM.sbn	6 244	6 244
Mineral_and_Coal_Permits_NZTM.prj	432	432
Mineral_and_Coal_Permits_NZTM.dbf	1 057 242	1 057 242
Mineral_and_Coal_EOL_NZTM.shx	124	124
Mineral_and_Coal_EOL_NZTM.shp.xml	15 026	15 026
Mineral_and_Coal_EOL_NZTM.shp	62 632	62 632
Mineral_and_Coal_EOL_NZTM.sbx	124	124

USING WEB SERVICES

In the top left hand corner of the map there is the 'using web services' link. This launches a guide which explains how to consume a range of datasets NZP&M publishes as web service. The banner takes you to our website.



www.nzpam.govt.nz
nzpam@mbie.govt.nz

PO Box 1473, Wellington 6140,
New Zealand

FREEPHONE (WITHIN NEW ZEALAND): 0508 263 782
INTERNATIONAL CALLS: +64 3 962 6179
FAX: +64 4 471 0187

NZP&M is a branch of the New Zealand Ministry of Business, Innovation and Employment. We manage New Zealand's Crown Mineral Estate. Our aim is to maximise the gains to New Zealand's economy from development of these resources, a key component to the government's Business Growth Agenda. To support this aim we endeavour to educate and inform New Zealanders, including consultation with indigenous stakeholders and local government.